

TH 89° 48' 41" WEST, 33.00'  
HENCE NORTH 00° 09' 51"

# SOUTH BARRINGTON

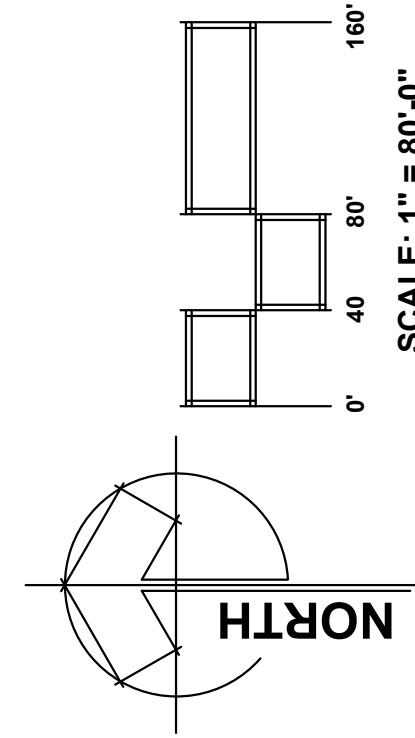
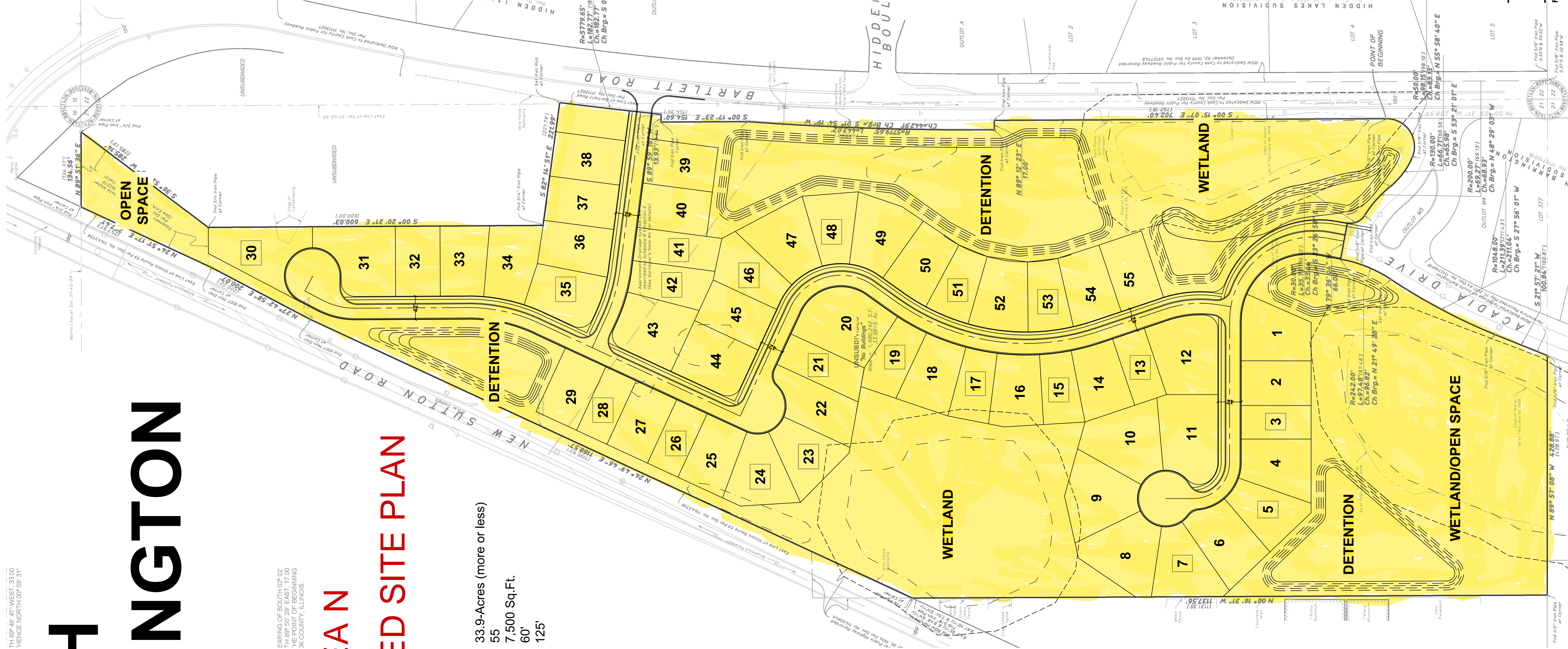
EARING OF SOUTH, 02° 02'  
TH 89° 50' 29" EAST, 17.00'  
THE POINT OF BEGINNING  
3K COUNTY, ILLINOIS.

## AREA N

## UNAPPROVED SITE PLAN

### SITE PLAN DATA

TOTAL AREA:	33.9-Acres (more or less)
TOTAL LOTS:	55
MINIMUM LOT SIZE:	7,500 Sq. Ft.
MINIMUM LOT WIDTH	60'
MINIMUM LOT DEPTH	125'
TOTAL 80' WIDE LOTS	35
TOTAL 60' WIDE LOTS	20



This plan was prepared to illustrate the development potential for the site. As a Site Plan, it is conceptual in nature. Therefore, all dimensions are subject to verification and the Site Plan is subject to modification pending a final planning, engineering, architecture and municipal approval.



826 East Maple Street  
Lombard, Illinois 60148  
PH: 630.561.3903  
www.metz-company.com

FEBRUARY 2, 2021